



## SCAI MAS Installation Instructions

Author	André Pietsch, Georg Westbeld, Andreas Kürsten
Version	V1.10
Print date	
Status	Public
Last Change	19.12.2003 11:02
Classification	Draft
File name	SCAI MAS Installation Instructions.sxw

# Contents

1 Introduction.....	3
2 Installation steps.....	4
2.1 Pre installation issues.....	4
2.1.1SAP DB or OracleTM?.....	4
2.2Setup OracleTM.....	4
2.3 Install SAP DB.....	4
2.4 Create database in SAP DB.....	5
2.4.1Create database with MASDBInstaller.....	5
2.4.2Create database manually.....	5
2.5 Database Manager.....	13
2.6 Start SCAI MAS® database instance.....	15
2.6.1 START Database instance.....	15
2.6.2 Configuring SCAI MAS® database instance for autostart.....	15
2.7 Install OpenOffice.org / StarOfficeTM.....	16
2.8 Install Apache webserver.....	16
2.9 Install Neevia Document Converter Pro.....	17
2.10 Starting SCAIMAS Setup.....	18
2.11 Install Microsoft Office 2000TM.....	24
2.12 Install Microsoft OfficeTM 2000 SP 3.....	24
2.13 Install SCAI MAS Office Activity Tracer Office Add-In.....	25
2.14Security of masdb.ini.....	26
2.15 Known Errors.....	26

# 1 Introduction

This document explains how to install the current version of the SCAI Migration Analysis Suite (SCAI MAS®).

You can download the current version from our home page. For this use the following URL:

<http://www.scaimas.de>

The name SCAI MAS® and the SCAI logo are registered trademarks protected under international law.

## 2 Installation steps

### 2.1 Pre installation issues

This document describes the installation of SCAI MAS<sup>®</sup> with all components (except the SCAI MAS Office Activity Tracer Office Add-In) on a single machine in the network. SCAI MAS<sup>®</sup> has to be run in the context of a domain administrator account. It is also possible to create an installation with more than one SCAI MAS<sup>®</sup> robot server or a distributed installation with SCAI MAS<sup>®</sup> robot server, database and Apache Webserver on different machines.

It is important that you go through this installation manual step by step, because the order of the steps is important.

#### 2.1.1 SAP DB or Oracle<sup>™</sup>?

##### SAP DB

Before you start with the installation, you must select which database you want to use. The custom solution is SAP DB. Due to this, it is described very detailed.

##### Oracle<sup>™</sup>

But it is also possible to use Oracle<sup>™</sup> as database, which is much better in performance. This is especially interesting for large organisations, which previously used Oracle<sup>™</sup> and already purchased it. Since Oracle<sup>™</sup> is for IT experts, no detailed description of the installation is given.

If using Oracle<sup>™</sup>, you can skip the chapters on SAP DB.

### 2.2 Setup Oracle<sup>™</sup>

As mentioned above there is no detailed description on how to set up Oracle<sup>™</sup> for obvious reasons.

After you have set up Oracle<sup>™</sup> the way you want, create a user named massys and give this user a password you like.

Grant the roles resource and connect to this user.

This user will be owner of all objects and will be used for login at the same time. If you want to have two users, one as a schema owner and a application user, you can do this manually.

After performing the installation using the schema username, open masdb.ini in the application directory and change the login data.

We will add support for two separate users in an upcoming version.

### 2.3 Install SAP DB

Install version 7.3 of SAP DB onto your computer. Even though version 7.4 is the most recent version you should use version 7.3. You can still download version 7.3 from <ftp://ftp.sap.com/pub/sapdb/bin/win>. Now follow these steps:

- Download and extract sapdb-all-win-32bit-i386-7\_3\_0\_40 .zip to a temporary folder.

Start the Windows command shell and execute the file SDBINST.EXE.

Now choose the installation option 3 for "SERVER" and accept all default values.

Repeat the installation if it fails the first time.

- Download and install SAPDB-dbmgui-7.4.03.10-win32.exe accepting all default values.
- Reboot your computer.
- Download and install odbc74-setup.exe. During the installation process the following dialog will appear on some systems.



If it appears, enter the desired Database Source Name into the corresponding field. We recommend enter "MASDBODBC". As Database, enter "MASDB" and your machine as Server.

- Download and install sqlstudio74-setup.exe accepting all default values.

## 2.4 Create database in SAP DB

To create a productive system, please follow the detailed instructions for installing SCAI MAS<sup>®</sup> manually (see 2.3.2). If you only want to test SCAI MAS<sup>®</sup>, you can choose to use the MASDBInstaller, which is shipped with your version of SCAI MAS<sup>®</sup>.

### 2.4.1 Create database with MASDBInstaller

To do this, simply run MASDBInstaller.EXE on an empty SAP DB and accept the defaults.

NOTE: It is important that no other SAP databases are installed. You must first drop any existing SAP DB databases (which means that all data will be lost).

We must stress that MASDBInstaller is only for testing and evaluation purposes. Although we have experienced no problems when working with databases generated by MASDBInstaller, it is quite likely that there will be some.

Now you can proceed with step 2.4.

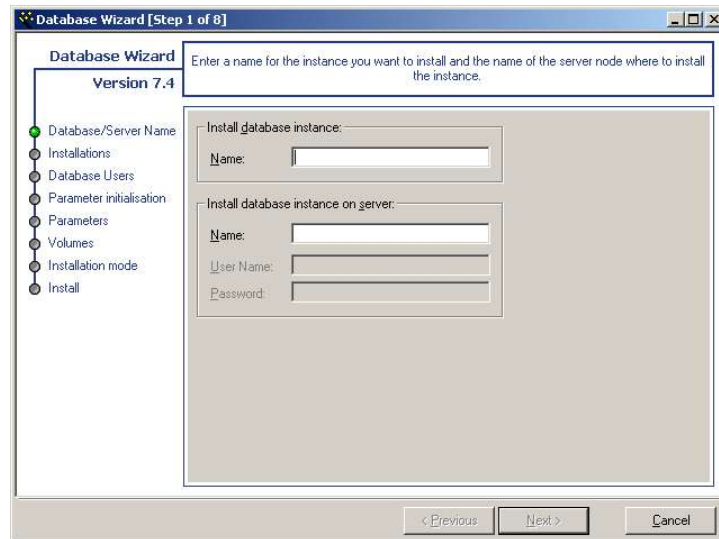
### 2.4.2 Create database manually

Run the SAP DB Database Manager. Choose <Instance> | <Install...> from the menubar.

Alternatively you can launch the wizard directly by using the Windows startmenu,

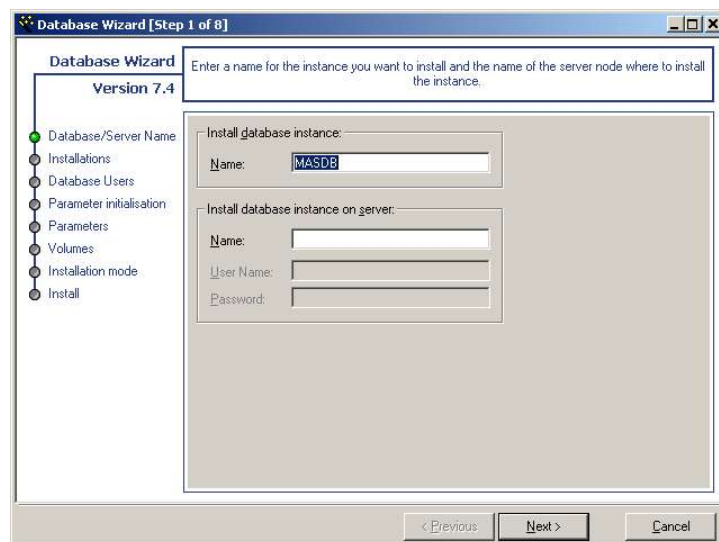
Start | Program Files | SAP DB | Database Wizard

After having launched the wizard, the following dialog appears on the screen:



Now select the options as follows:

- Step 1:
  - Install database instance
    - Insert the text MASDB into the Name field



- Other fields: Empty / Unchanged
  - Install database instance on server
    - The Name field is intentionally left blank. If omitted it always connects locally.

- Step 2:

Now you have to select the version of SAP DB installation.

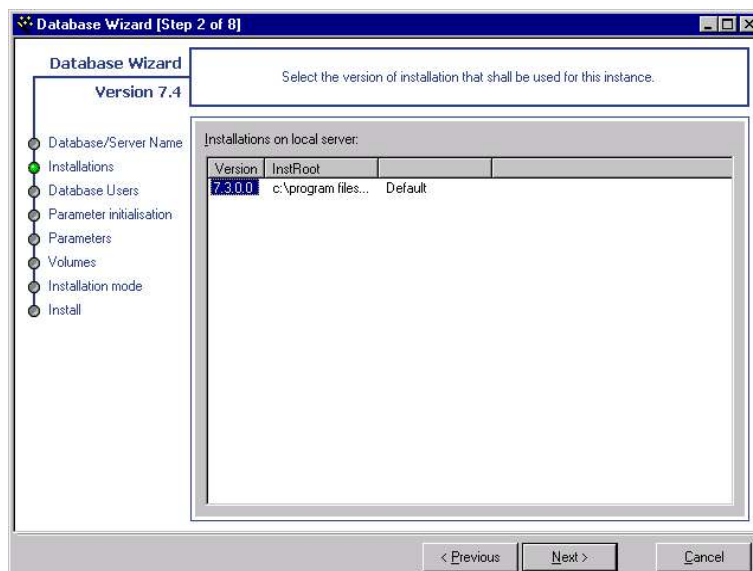
For first time installation only:

This list should contain only one entry. If you have more than one entry stop the installation process and uninstall all other SAP DB installations. To do so, it is necessary to stop all SAP DB services. Then uninstall all SAP DB software by using the SDBUNINST.EXE. Search for this application by using the Windows Explorer search functions.

Next delete all SAP DBTech trees in the registry if still there. You'll find them in "HKEY\_CURRENT\_USER\Software\SAP" and in "HKEY\_LOCAL\_MACHINE\Software\SAP".

After rebooting, you can delete the "C:\Program Files\SAP" directory from your harddisc.

**DANGER:** Doing this will destroy all your existing SAPDB databases. Maybe you should choose a different (dedicated) server.



- This step shows all currently installed SAP DB installations (see figure below).
- Other fields: Empty / Unchanged

- Step 3:

Now you have to enter the user name and password for the database manager. For this enter the following items:

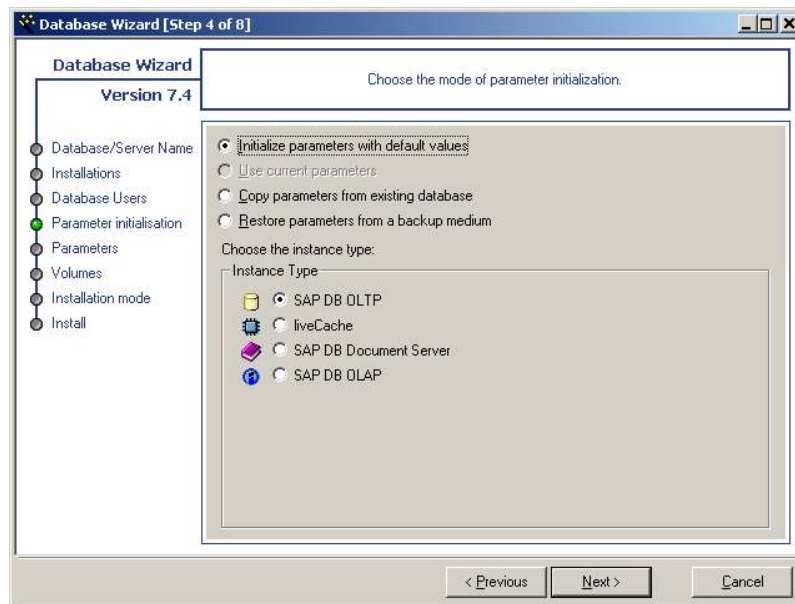
- Database Manager Operator
  - Enter the following parameters into the listed fields:
  - User Name: masdmo
  - Password: masdmo
  - Confirm Password: masdmo

Now you have to enter the user name and password for the database administrator. For this enter the following items:

- Database System Administrator
  - User Name: massys
  - Password: massys
  - Confirm Password: massys

- Step 4:

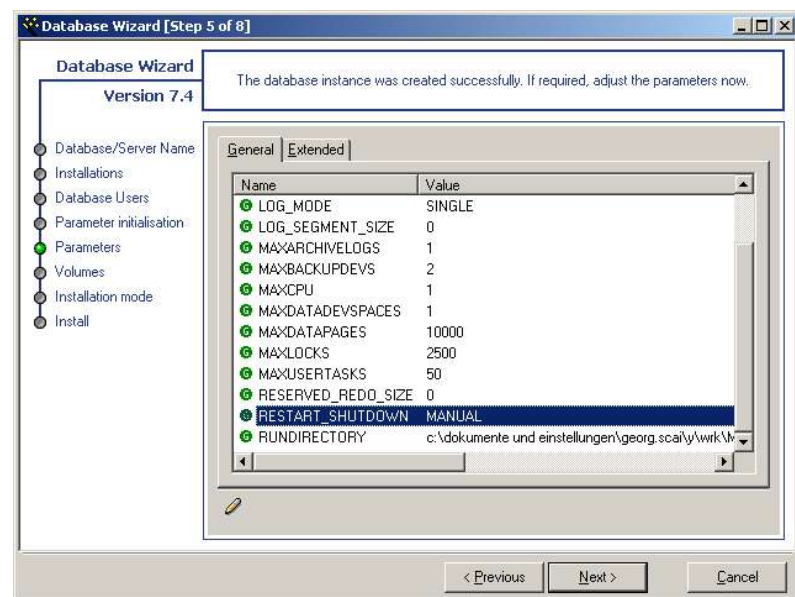
Now choose the mode of parameter initialization



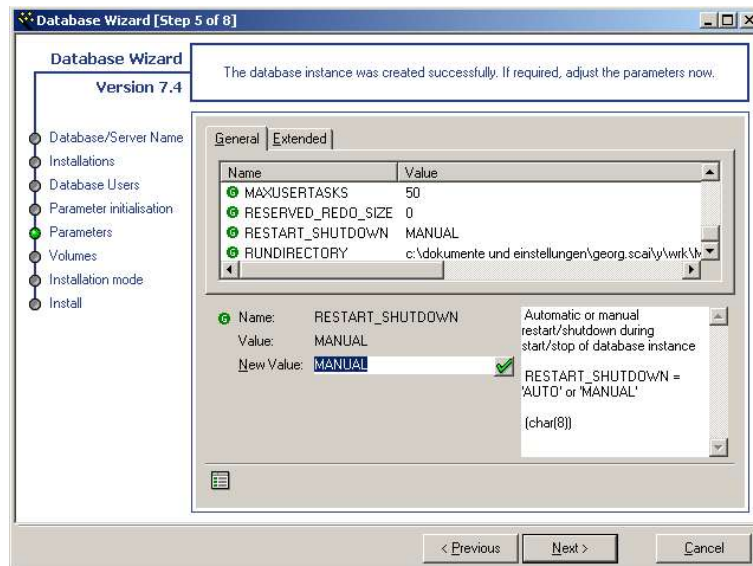
- Accept the default options as shown. Don't change then.


Step 5:


This step allows you to change the database parameters for our needs. You have to change the following two parameters:



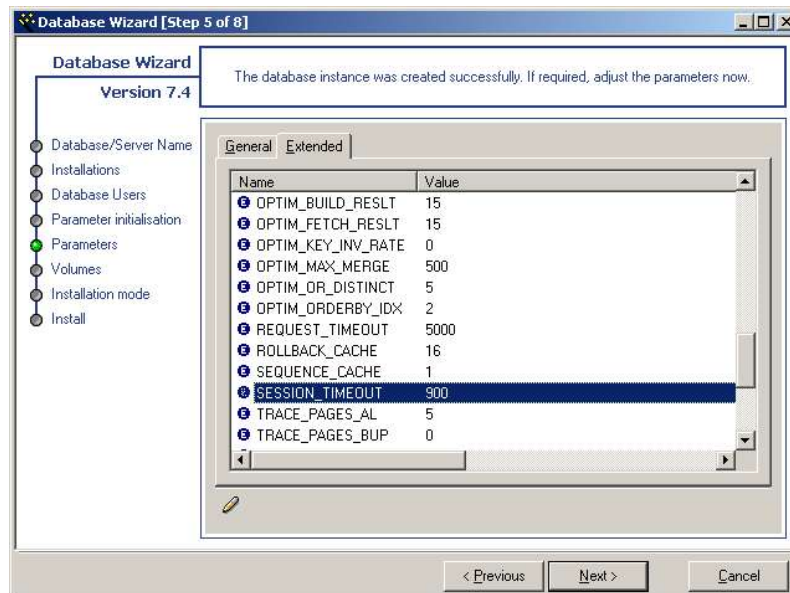
- Double click the RESTART\_SHUTDOWN entry in the General tab  
The following dialog will appear:




Now replace the text "MANUAL" with "AUTO" in the New Value field. Use only upper case. Press the  button to confirm your entry. Check the entry by horizontally scrolling the list box at the top. The column New Value should display the value "AUTO".


To get back to the previous screen click the  button. Don't use the Previous button at the bottom of this dialog.

- Now select the Extended tab and double click the SESSION\_TIMEOUT entry as shown below.

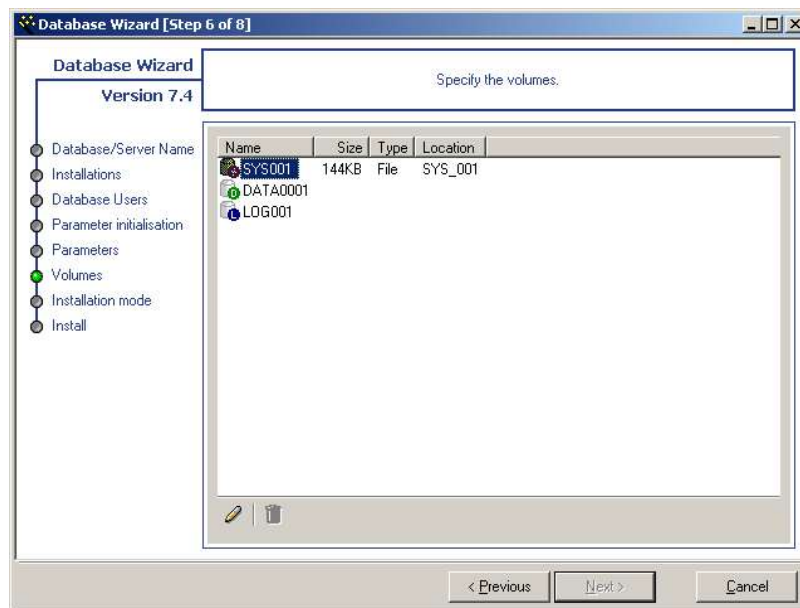


Now replace the value "900" with the value "0" in the field New Value.

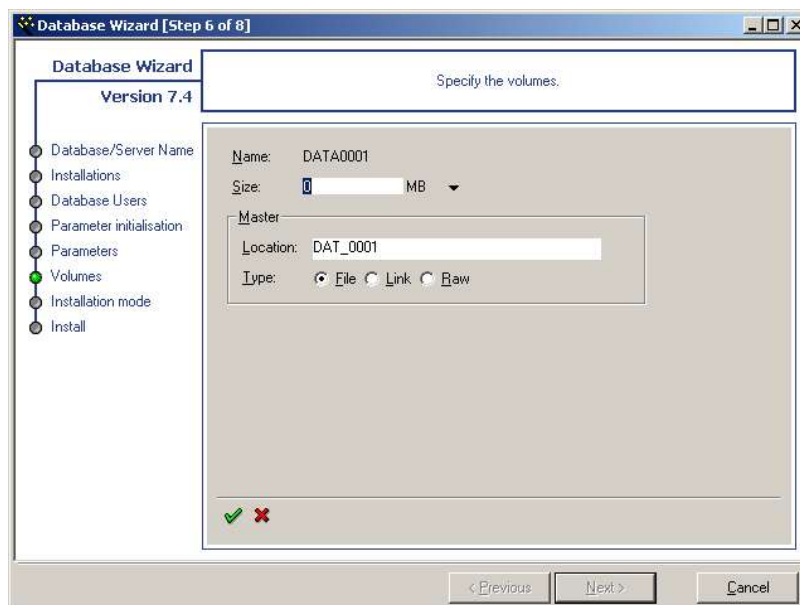
Press the  button to confirm your entry. Check the entry by horizontally scrolling list box. The column New Value should display the value "0".


To get back to the previous screen click the  button. Don't use the Previous button at the bottom of this dialog.


- Step 6:  
This step allows you to specify the volumes. The SYS001 volume is set automatically, so don't change it.



- Now double click the entry DATA001. The following dialog appears on the screen:

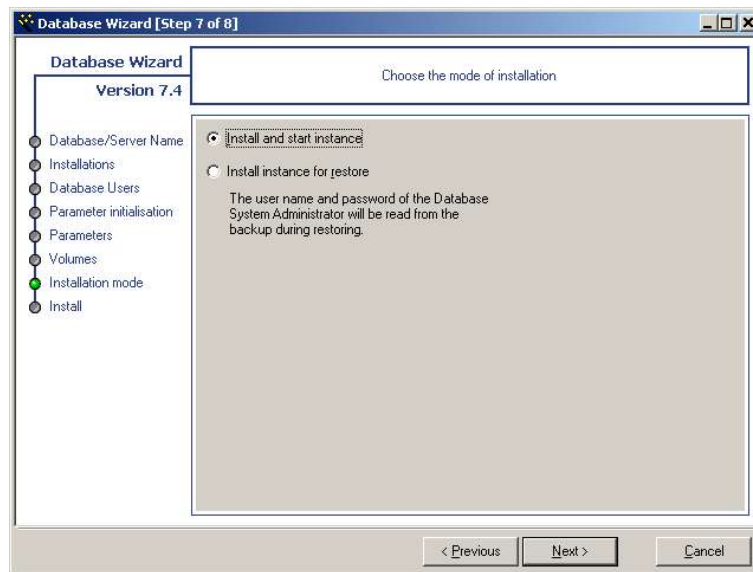


First select MB from the list right to the field Size. Then enter the value "250" into the field and confirm your entry by pressing the  button.

- Now double click the LOG001 entry. First select MB from the list right to the field Size. Then enter the value "250" into the field and confirm your entry by pressing the  button .

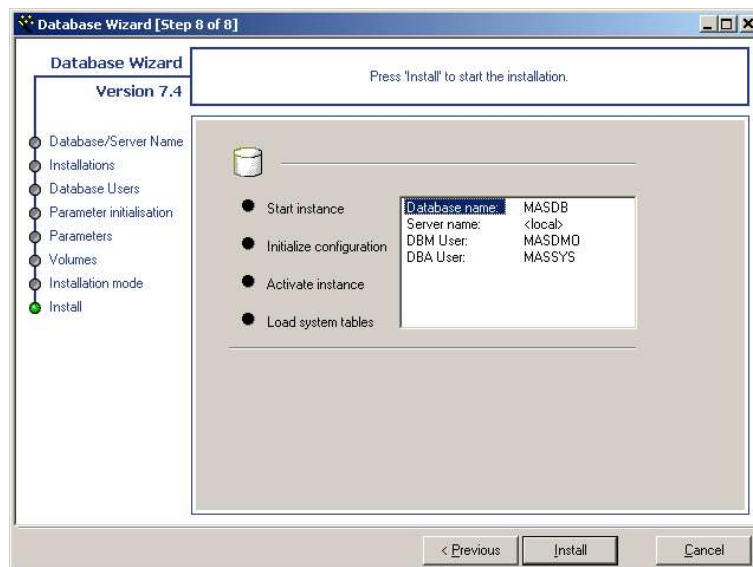
### Step 7:

Now you can choose the installation mode. Leave the default value and click the button Next>.



### Step 8:

This is the last step. Click to the Install button to start the installation.



- On some systems, the following screen appears.



We recommend to accept the default value which should be "MASDB".

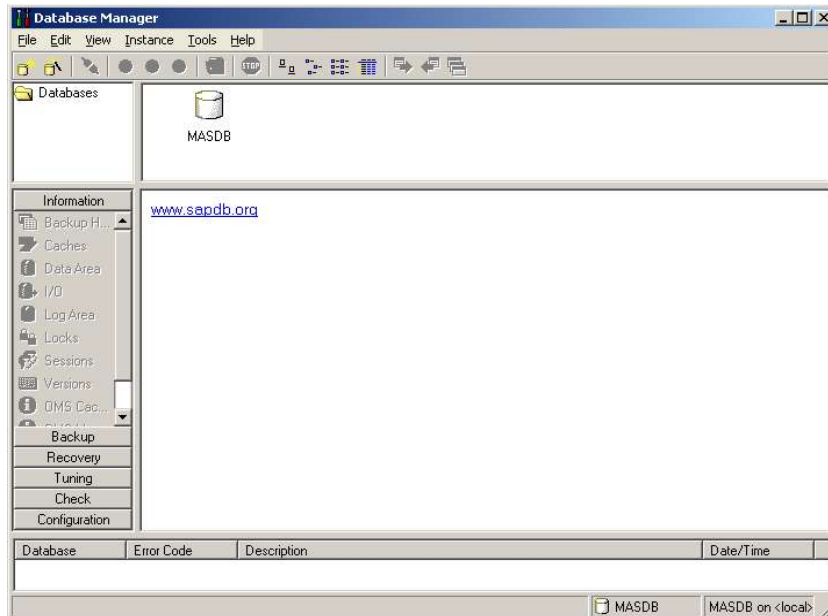
- Reboot your computer.

## 2.5 Database Manager

You may have to register your MASDB manually. To do so, launch the Database Manager from the Windows start menu, using the command

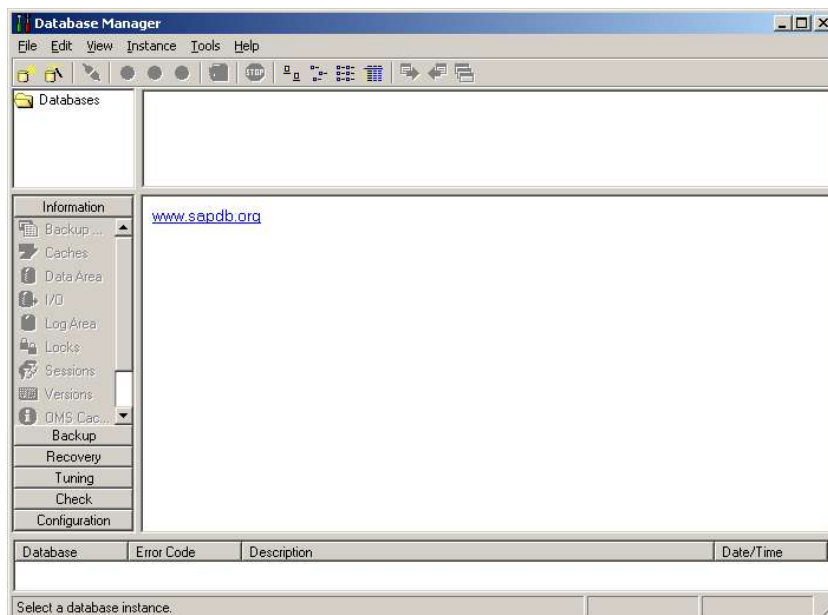
Start | Program Files | SAP | Database Manager

If your MASDB is already registered, the application window will appear as shown below.

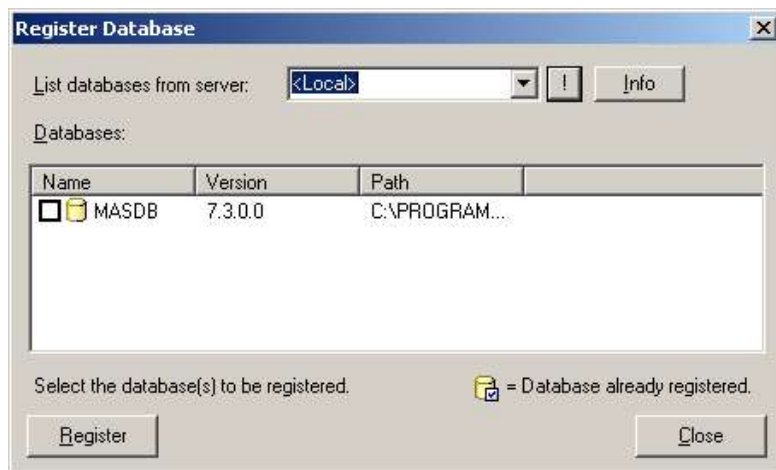


If the MASDB is displayed as above, you can proceed straight to chapter 2.5.

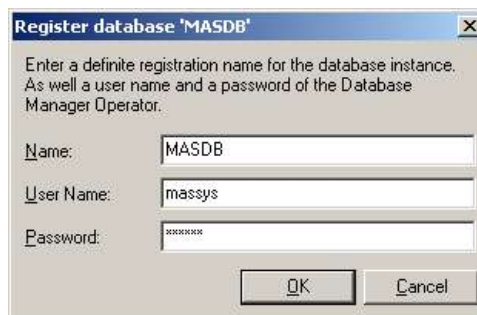
If your MASDB is not yet registered, the application window will appear as shown below.



Select the command Register... from the File menu. The following dialog appears on your screen:



Select the MASDB entry and press the Register button on the left side of this dialog. The following dialog will appear:

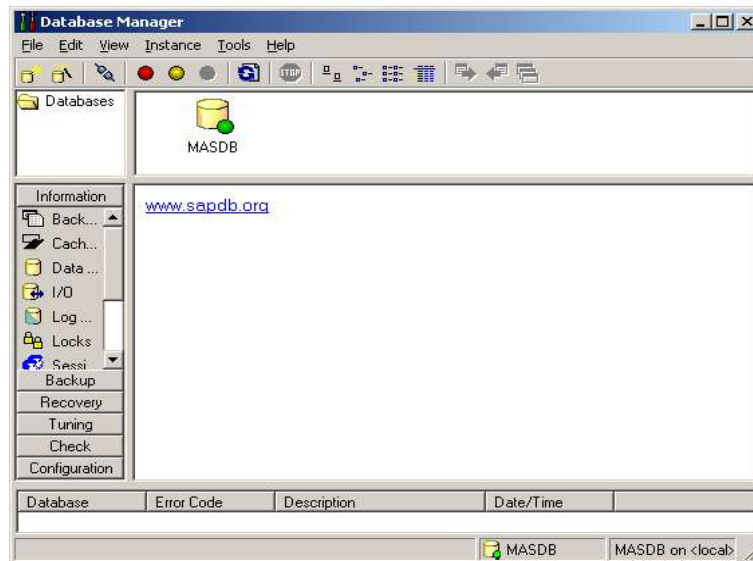


Enter the User Name "massys" and the Password "massys" into the respective fields. Than click the OK button and the database will be registered.


Now you can close the Register Database dialog by pressing the Close button.

## 2.6 Start SCAI MAS<sup>®</sup> database instance

Before starting the SCAI MAS<sup>®</sup> setup procedure, we recommend that you START the SCAI MAS<sup>®</sup> database instance first. This will ensure that all processes are initialized correctly and that the SCAI MAS<sup>®</sup> application has access to the database.



### 2.6.1 START Database instance

After you have selected the MASDB instance, click the Set Online button  on the toolbar. After a while the database symbol will appear with a green bullet. The database instance is now running.

### 2.6.2 Configuring SCAI MAS<sup>®</sup> database instance for autostart

Due to problems with the "AUTO" parameter, it could be necessary to set the MASDB manually to "autostart". For this, open the "Control Panel" from the Windows start menu, by using the command

Start | Settings | Control Panel

Then click on Services, select your SAP: MASDB, click on Startup and select automatic. By selecting OK, you confirm your selection.

## 2.7 Install OpenOffice.org / StarOffice™

Install version 1.1.0 of OpenOffice.org / StarOffice™ onto your computer. You can download it from <http://www.openoffice.org>

Now follow these steps:

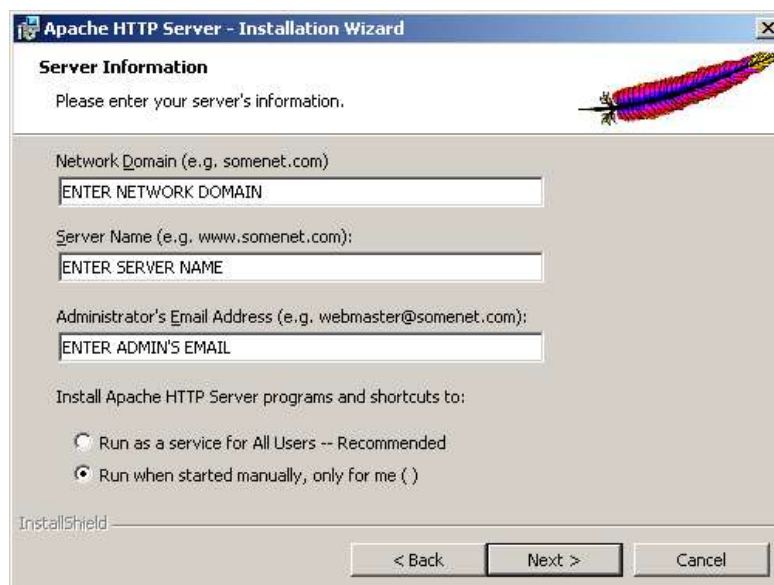
- Download and extract OOo\_1.1.0\_Win32Intel\_install\_de.zip to a temporary folder.
- Execute SETUP.exe.
- Accept all default values, agree to the license agreement, enter your personal information, select Standard Installation and start the installation. (It is not necessary to install an additional java environment. If requested – simply choose do not use).
- Reboot your computer, disable the OpenOffice.org quick starter and start OpenOffice.org one time and select never register / already registered.

## 2.8 Install Apache webserver

Install version 1.3.XX of Apache webserver onto your computer. You can download it from <http://apache.org/> or a mirror site.

Follow these steps:

- Download apache\_1.3.XX-win32-x86-no\_src.exe from a mirror site like <http://apache.easy-webs.de/httpd/binaries/win32/>
- Execute apache\_1.3.XX-win32-x86-no\_src.exe.
- Accept all default values and agree to the license agreement until you enter the following screen.



- Here, you should select Run when started manually, only for me ( ). Caution – this is not selected as default!
- Click on Next, choose Complete (installation) and accept the default folder.
- Click on Install to start the installation.
- Select Finish to end the installation of your Apache webserver.

## 2.9 Install Neevia Document Converter Pro

If you want to convert documents to PDF, you have to install the Neevia Document Converter Pro. You can download it from <http://neevia.com/>.

To do this, follow these steps:

- Go to Neevia's webpage under <http://www.neevia.com/trial.aspx?prodID=ADC49pro> (you have to enter your name and email).
- Download Document Converter installer (10.71 mb) and Image Conversion Pack (4.51 mb).
- Execute SETUP.exe and IMGPACK.exe (if a message about a „locked file“ appears, simply select Ignore).

Document Converter Pro has to be installed on the same machine as SCAI MAS®.

- Start the Document Converter application.

## 2.10 Starting SCAIMAS Setup

Get the most recent version of SCAIMAS from our web server. To do so, look up the URL

<http://www.scaimas.de>

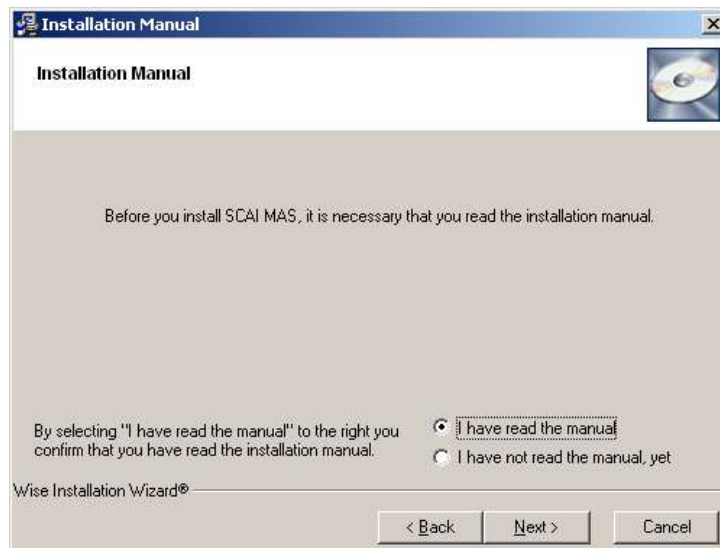
Unzip the file and execute the setup.exe. The following installation steps will appear on your screen:

- Step 1:  
Accept the license agreement if you want to continue.



Click the Next button to get to the next step.

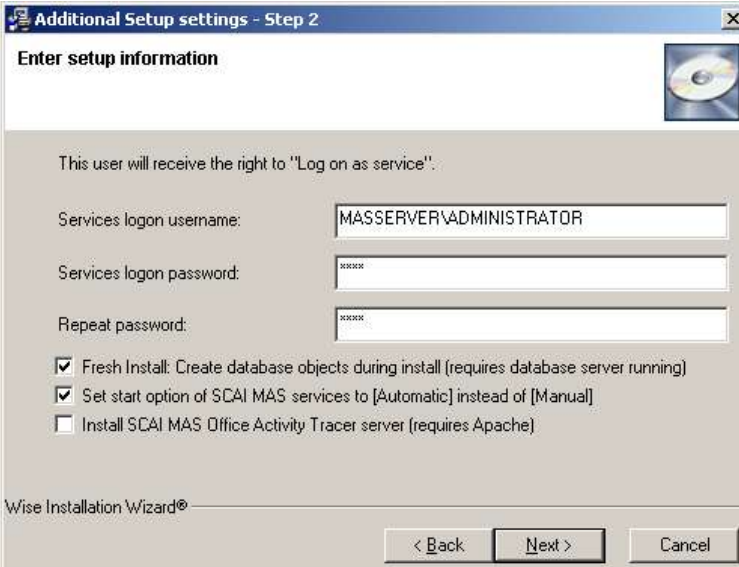
- Step 2:  
Confirm that you have read the installation manual if you want to continue.



- Step 3:  
Step 3 allows you to check the installation parameters of your database installation.

1. Check the Database server name. By default the local machine will be prompted.
2. Check the Database Name.
  - If you've installed the database using the default database name, then this should be the right value. Otherwise, enter the database name you've used during the SAP Wizard installation process.
  - If using Oracle™, you have to enter the name of your Oracle™ database.
3. Check the Database systemuser name.
  - If you've installed using the defaults, then this should be the right value. Otherwise enter, the database system user name you've used during the SAP Wizard installation process.
  - If using Oracle, you have to enter the name of the previously created user.
4. Check the Database system user password.
  - If you've installed using the defaults, then this should be the right value. Otherwise enter the database system user password you've used during the SAP Wizard installation process.
  - If using Oracle, you have to enter the password of the previously created user.
5. Enter a name of your choice in the ODBC DSN field. The illustration shows one possible suggestion.
6. Enter the name of the ODBC driver in the ODBC driver name field. You can find a list of the available ODBC drivers in the ODBC configuration manager in the control panel.
  - As seen in illustration above „SAP DB“ is the ODBC driver name in this example.
  - If using Oracle, a possible ODBC driver name would be „Oracle in OraHome92“.
7. Choose, if you want to use Oracle™ or SAP DB as database by selecting the Database type. This selection must be made according to the ODBC driver name.
8. Verify your installation parameters by selecting the Check DB button. This will test, if the database is accessible and if an update of the database structure must be performed.

9. If everything is all right, proceed by clicking the Next button, which will appear instead of the Check DB button.
- Step 4:  
Now you have to enter the user name for the database. This user must have domain administrator rights. The following figure shows the dialog of step 4:



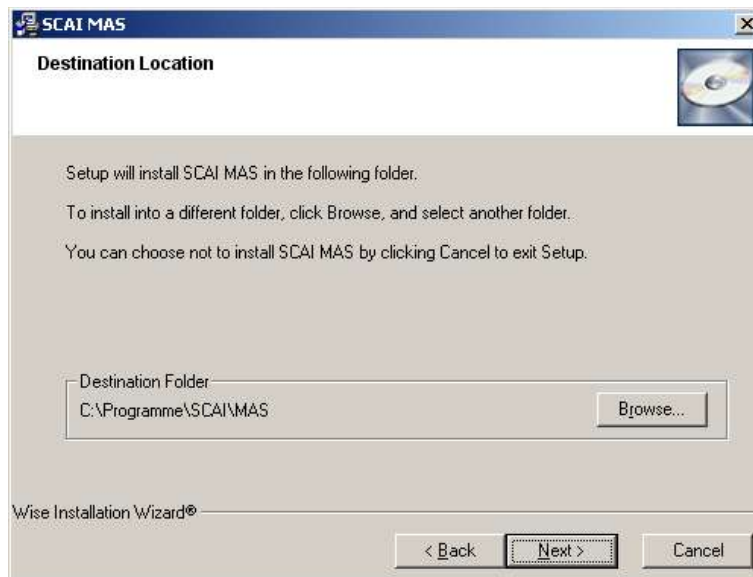
1. Enter the Services username into the named field. The username should have the following format <Domainname>\<user name>
2. Enter the Services logon password in the appropriate field.
3. Confirm the password by entering it in the Repeat password field.
4. Now verify if your desired options are checked.
  - Fresh Install: Create database objects during install (requires SAP DB or Oracle™ running on database server)

**ATTENTION:**

This option should only be checked, if you are installing for the first time or if you want to reinstall all tables. Existing tables will be deleted.

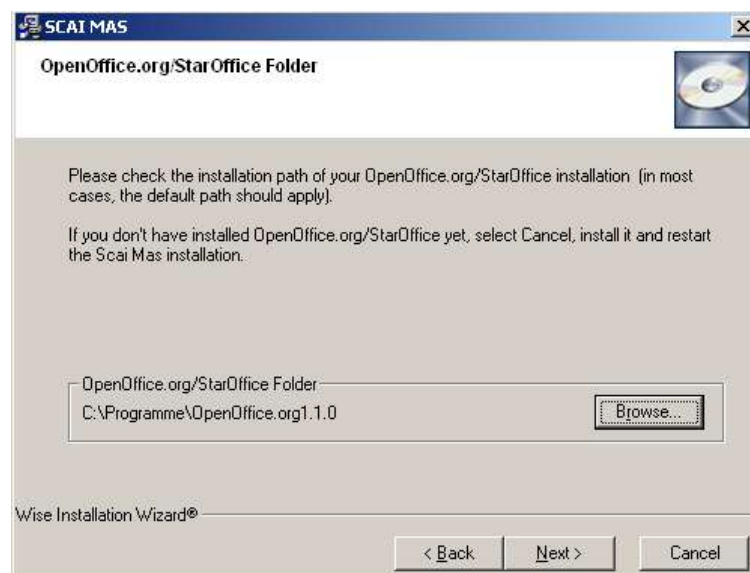
  - Set start option of SCAI MAS® services to [Automatic] instead of [Manual]
  - If you want to use this computer as SCAI MAS Office Activity Tracer server, you have to check the third item (this is not checked by default).
5. Now click the Next button, to proceed to step 5.

- **Step 5:**  
Within this step you can define the installation directory for the SCAI MAS® application.  
The following figure shows the dialog of step 5.

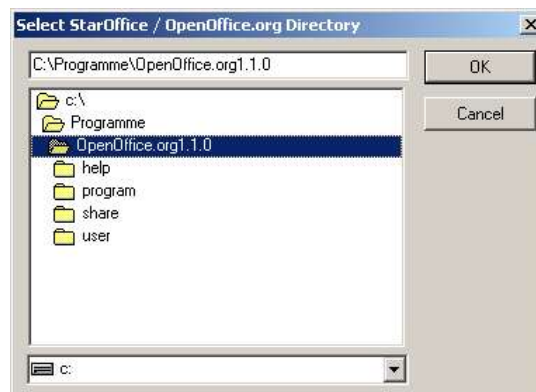


Click to the Next button for the next step.

- **Step 6:**  
In step 6, you have to select the installation path of your OpenOffice.org / StarOffice™ installation. Normally, the default value should suffice, so that you only have to click to the Next button for the next step. If the path is not right or left empty, click the Browse button and select the path manually.



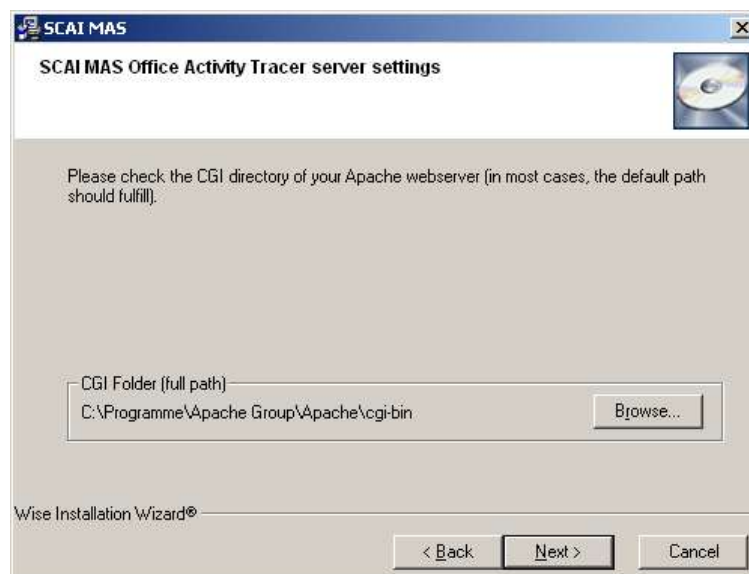
If you selected the Browse button, the following screen will appear. Here you can select the installation path of your OpenOffice.org / StarOffice™ installation.



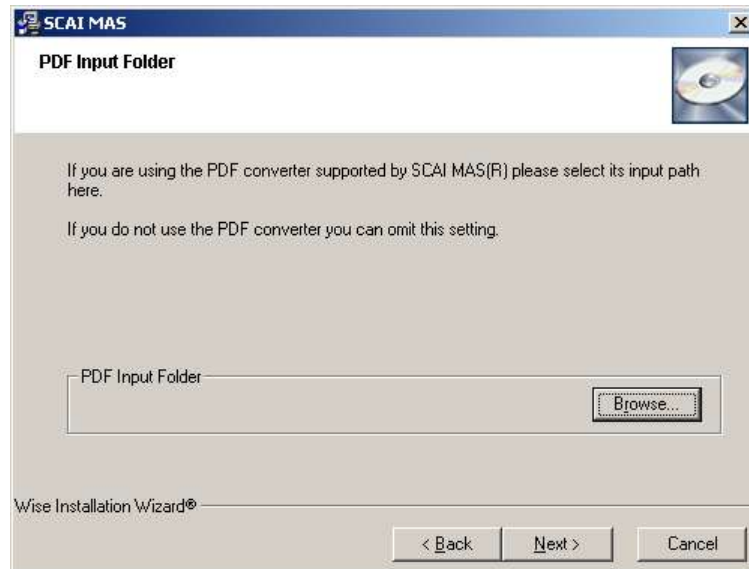
If ready, first click on OK. Then click the Next button for the next step.

- Step 7:

If you selected to use this computer as SCAI MAS Office Activity Tracer server, you now have to select the CGI Folder of your Apache webserver (the full path is necessary). Normally, the default value should suffice, so that you only have to click to the Next button for the next step. If the path is not right, click the Browse button and select the path manually as in step 6.



- Step 8:  
If you want to convert documents into PDF, you have to select the input path of your Neevia Document Converter Pro. To do so, click the Browse button and select the path as shown in step 6.



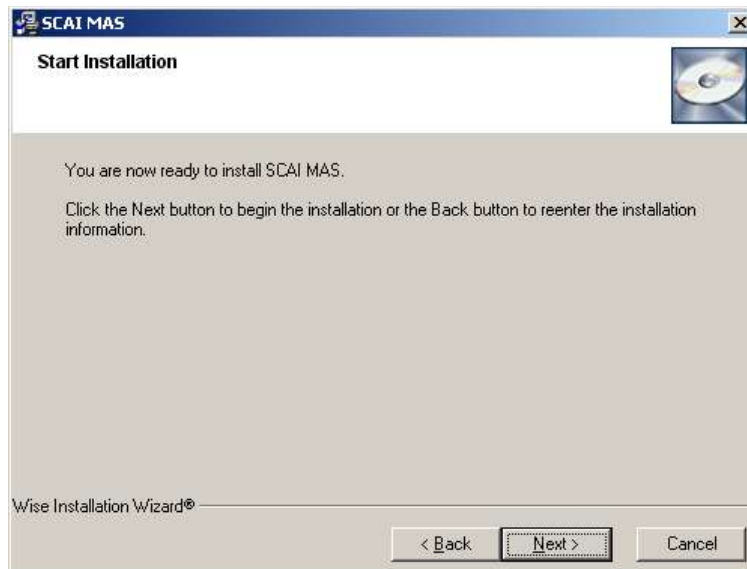
Click to the Next button for the next step.

- Step 9:  
Now you can start the installation process. Click the the Next button, to start the installation.

If the database structure has to be updated you will be informed by message box. Click Yes to proceed.

After a short period, the installation will be done. Then you have to click on Finish. To complete the installation process, you must restart your computer. You can do this by clicking the OK button at the end of your SCAI MAS® installation. Now you can use the SCAI MAS® application. You can launch it by using the start menu:

Start | Program Files | SCAI MAS | SCAI MAS



## 2.11 Install Microsoft Office 2000™

If not already done so, install Microsoft Office 2000™.

Working with SCAI MAS® may show some error messages. In the following we'll describe known error messages and what to do:

- Missing Hyphenation DLL
  - Your Microsoft Office 2000™ installation was not completely installed
  - The document is written in a language that is not supported by the installed Microsoft Office™ version. Then you have to install the Microsoft Office 2000™ Proofing Tools. Use the URLs

<http://www.microsoft.com/office/previous/deployment/worldwide/proofing.asp>

and

<http://shop.microsoft.com>

## 2.12 Install Microsoft Office™ 2000 SP 3

Download and install Microsoft Office 2000™ SP 3.

## 2.13 Install SCAI MAS Office Activity Tracer Office Add-In

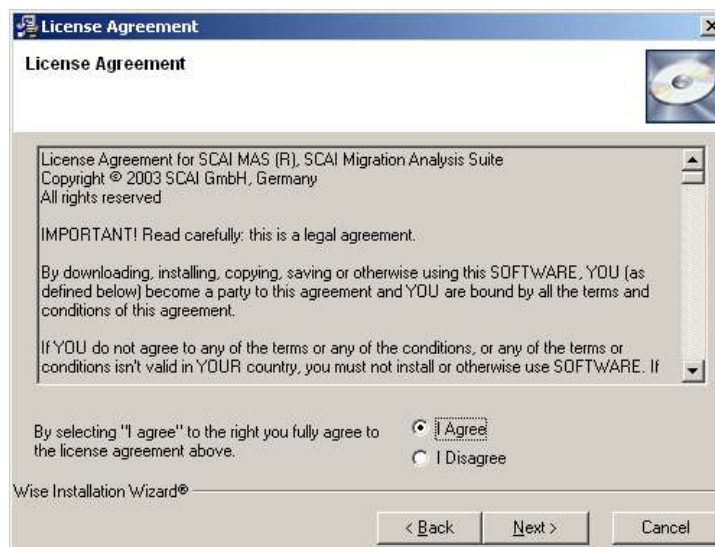
As last step of the SCAI MAS® installation, you need to install the SCAI MAS Office Activity Tracer Office Add-In. You should install this on each client (that should be migrated). This is necessary to record the usage of the Microsoft Office™ documents.

It is IMPORTANT that the SCAI MAS Office Activity Tracer Office Add-In is not installed on any computer that is used as a SCAI MAS® robot server!

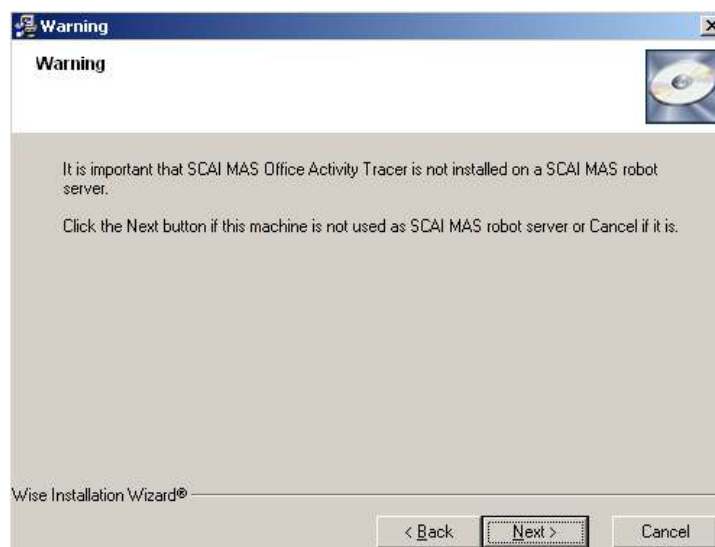
Execute the setup\_oat.exe, which is located in the same folder as the setup.exe of the SCAI MAS® installation.

Now the following installation steps will appear on your screen:

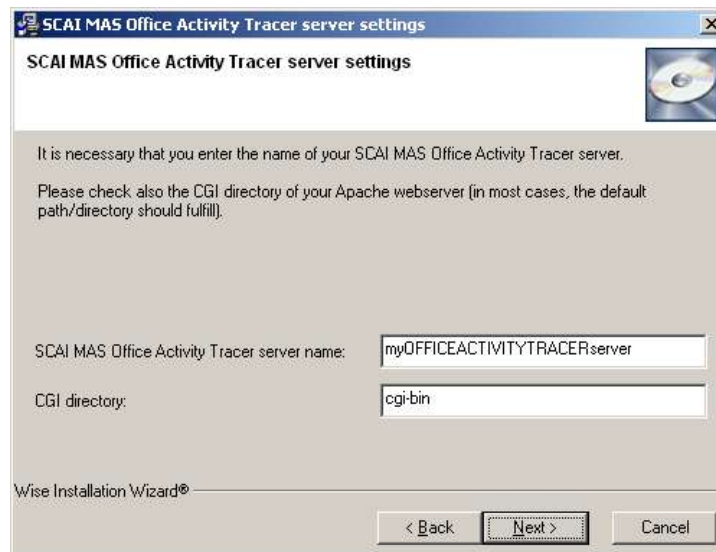
- Step 1:  
Accept the license agreement, if you want to continue.



- Step 2:  
Select Next if this computer is NOT used as a SCAI MAS® robot server.



- **Step 3:**  
In this step, you have to enter the name of your SCAI MAS Office Activity Tracer server and the CGI directory of your Apache webserver (only the CGI directory – not the full path). In most cases, the default directory should suffice.



- **Step 4:**  
Now you can start the installation process. Click the the Next button to start the installation. When the installation is completed, you will need to reboot your system.

The activation of the SCAI MAS Office Activity Tracer Office Add-In works only for users, which are logged in. Due to this, another short setup program (setup\_oat\_edreg.exe) is put in the Windows startmenu (Start | Program Files | Autostart) and activated automatically with each user login.

## 2.14 Security of masdb.ini

In more complex environments it is possible you want to protect your database login data which is stored unencrypted in the file masdb.ini in the application directory.

You might want to change the security parameters of this file for enhanced protection.

## 2.15 Known Errors

- See Online-Help